

Business Structure

LOGISTICS & SUPPLY CHAIN

B2B INTEGRATED LOGISTICS

- General & Freezezone Warehouse
- Chemicals & Dangerous goods
- Automotive
- Food & Cold Chain
- Transportation & Distribution
- Freight Forwarding & Supply Chain Management
- Document Storage & Information Management
- Project Cargo

B2C INTEGRATED LOGISTICS

- Relocation
- Self Storage
- Fine Art Logistics Solutions
- E-Commerce

OVERSEAS LOGISTICS

- Countries
- Laos
 - Cambodia
 - Myanmar
 - Vietnam
 - Singapore
 - Malaysia
 - Indonesia
 - Taiwan

LOGISTICS INFRASTRUCTURE

- Terminal & Port Operation
- Rail Transfer Operator

FOOD SUPPLY CHAIN

FOOD PROCUREMENT

FOOD TRADING & DISTRIBUTION

FOOD PROCESSING

IT SOLUTIONS

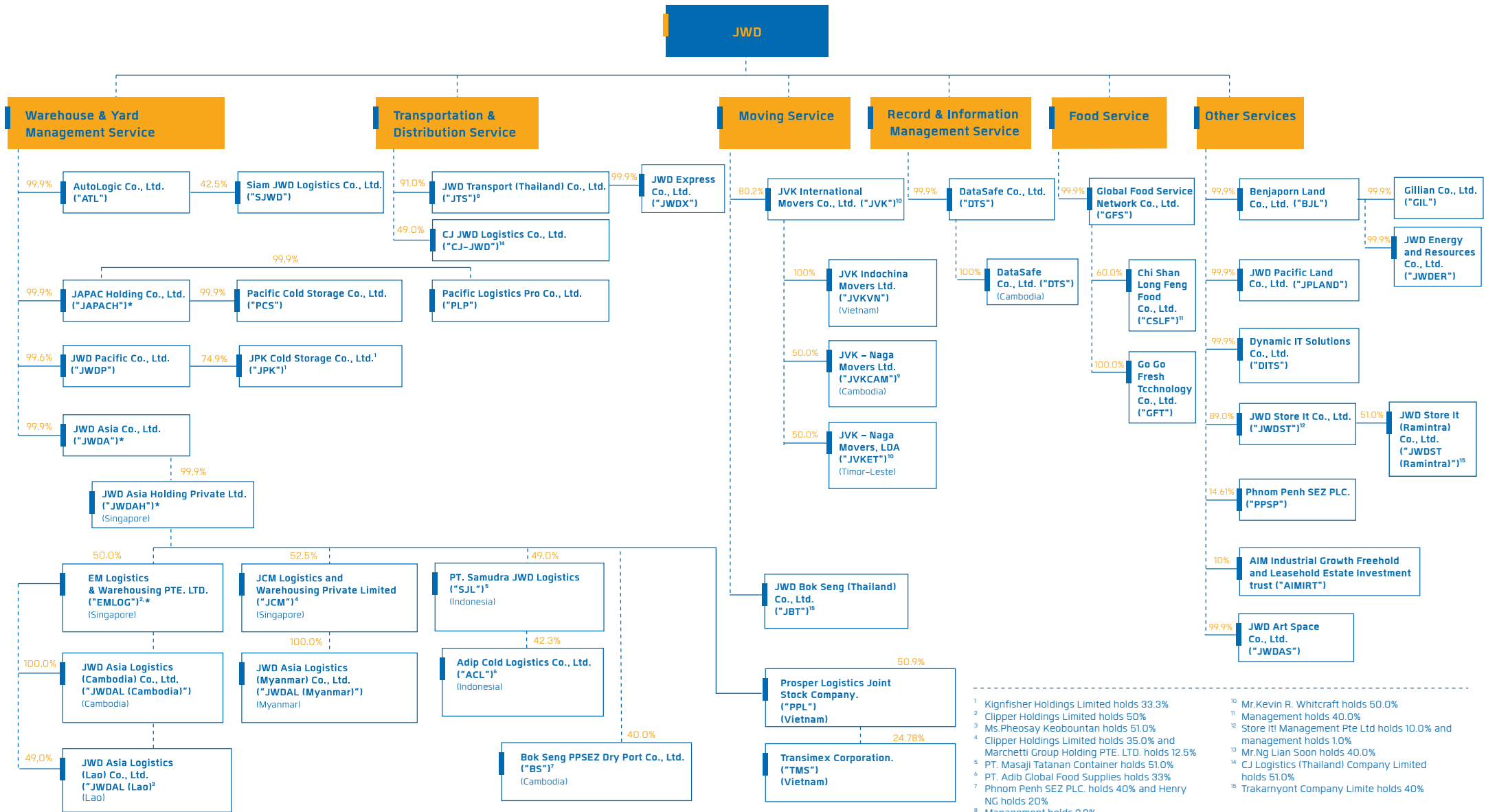
INVESTMENT

ASSET MANAGEMENT

INVESTMENT FUND



Shareholding Structure



¹ Kignfisher Holdings Limited holds 33.3%
² Clipper Holdings Limited holds 50%
³ Ms.Pheosay Keouboutan holds 51.0%
⁴ Clipper Holdings Limited holds 35.0% and Marchetti Group Holding PTE. LTD. holds 12.5%
⁵ PT. Masaji Tatanan Container holds 51.0%
⁶ PT. Adib Global Food Supplies holds 33%
⁷ Phnom Penh SEZ PLC. holds 40% and Henry NG holds 20%
⁸ Management holds 9.9%
⁹ Mr. Kevin R. Whitcraft, Mr. Mark L. Whitcraft and Mr. Thomas A. Whitcraft holds 50.0%
¹⁰ Mr. Kevin R. Whitcraft holds 50.0%
¹¹ Management holds 40.0%
¹² Store It Management Pte Ltd holds 10.0% and management holds 1.0%
¹³ Mr. Ng Lian Soon holds 40.0%
¹⁴ CJ Logistics (Thailand) Company Limited holds 51.0%
¹⁵ Trakamyont Company Limite holds 40%

* (Holding Company)